



## Flat 15, 14, Dorset House Mount Pleasant , London, WC1X 0BU

**£3,500**

Discover contemporary urban living at its finest in this stunning 1-bedroom flat located in the prestigious Truro House at Postmark, London.

This elegant residence boasts 1 well-appointed bedrooms, with ample space for rest and relaxation. The sleek design of the main living area seamlessly integrates the living room and kitchen, creating an inviting space for entertaining and everyday living. Modern amenities and finishes enhance the overall appeal, while large windows flood the interior with natural light.

With its prime location, excellent connectivity, and sophisticated interiors, this flat offers an unparalleled opportunity to experience the vibrant lifestyle of central London.

Residents of Postmark would have exclusive access to 24hr concierge, gym, cinema, lounge, courtyard & rooftop gardens.

5 Tube stations within walking distance : Russell Square, Holborn, Farringdon, Kings Cross & Chancery Lane, accessing 7 Tube lines. Elizabeth line will cut your journey in half.

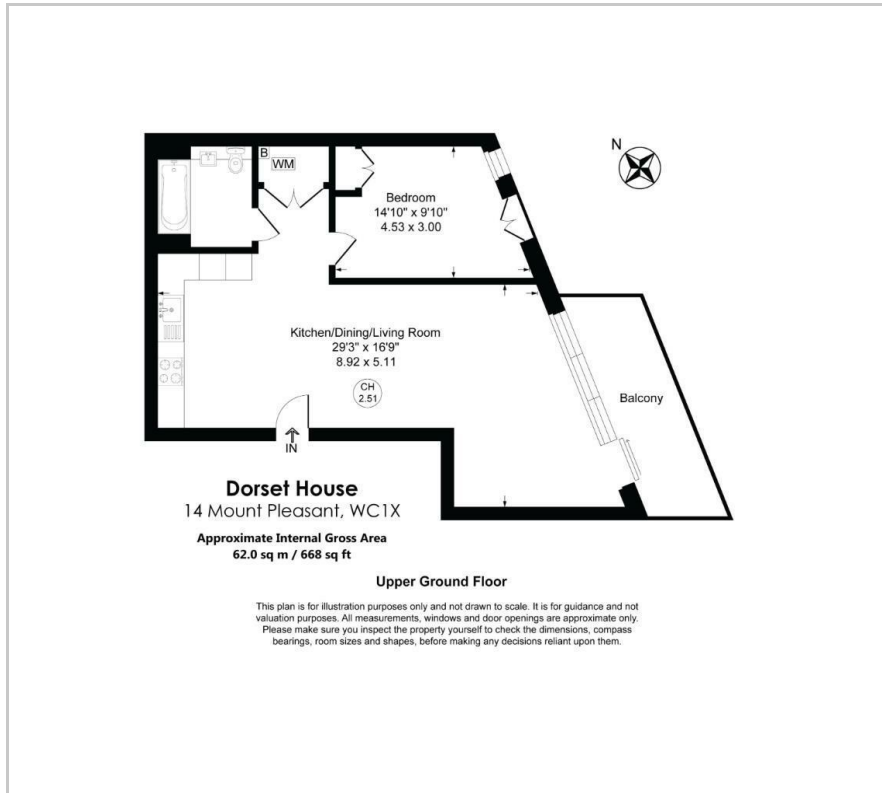
- 1 bedroom
- Resident's Only Facilities: Gym, Cinema, Lounge, Courtyard & Rooftop Gardens
- Moment Away From 5 Major Tube Stations
- 24 Hour Concierge
- Underfloor Heating
- Across Prestigious Postcodes WC1 & EC1
- Located In Zone 1

### Viewing

Please contact us on 020 3198 4517 if you wish to arrange a viewing appointment for this property or require further information.



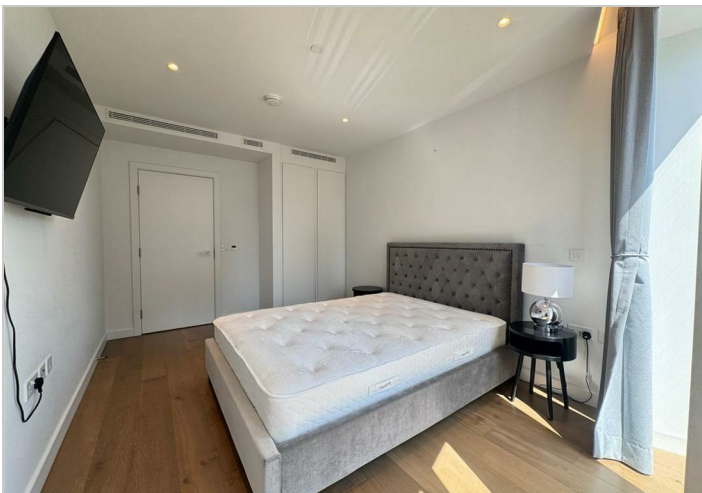
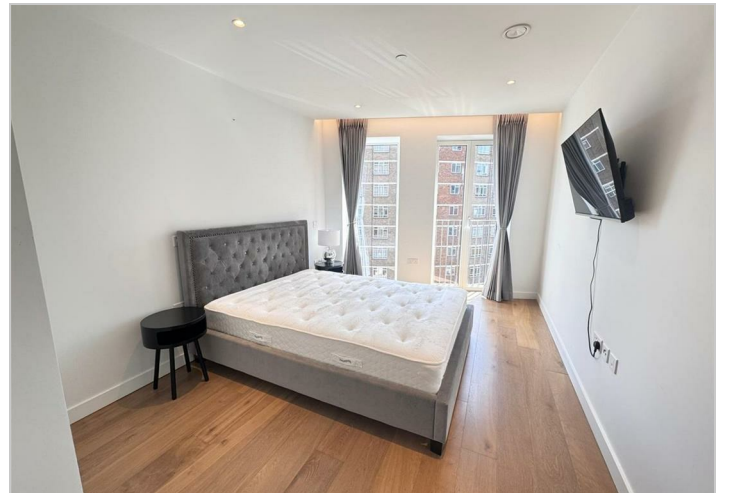
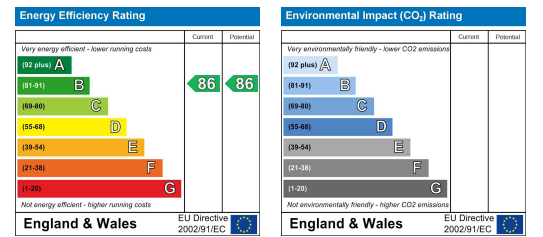
## Floor Plan



## Area Map



## Energy Efficiency Graph



These particulars, whilst believed to be accurate are set out as a general outline only for guidance and do not constitute any part of an offer or contract. Intending purchasers should not rely on them as statements of representation of fact, but must satisfy themselves by inspection or otherwise as to their accuracy. No person in this firm's employment has the authority to make or give any representation or warranty in respect of the property.